

Yeosu Web Contents

2024년 02월 29일 01시 24분



목차

목차	2
Symbol	3
Symbol	3
Mascot	3
Flower- Camellia	4
Bird-Seagull	4
City Tree - Camellia Shrub	5

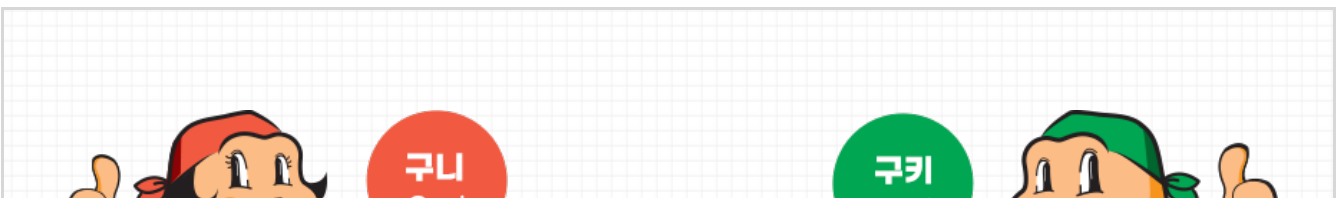
Symbol



Three oval shapes mean the eastern idea of heaven, earth and man. The shape of island at the center simply visualizes Odongdo by modern sense. The visual perceptual energy flowing in large oval shape means the will of advancement and the continuous development of maritime city Yeosu toward the world.

[AI download](#)
[JPG download](#)


Mascot

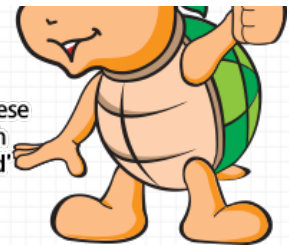




Guni

A letter 'Turtle' in Chinese character is combined with the feminine name 'Nee' to name.

Guki

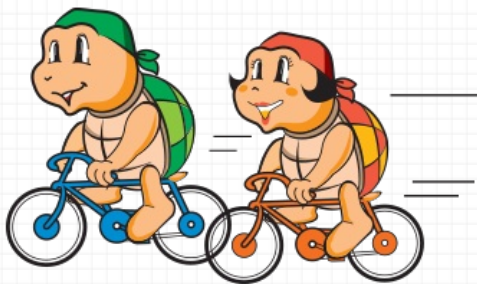
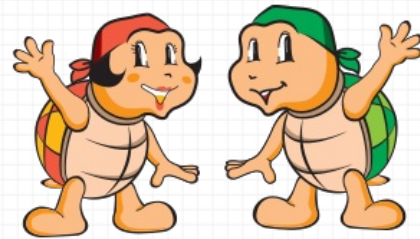
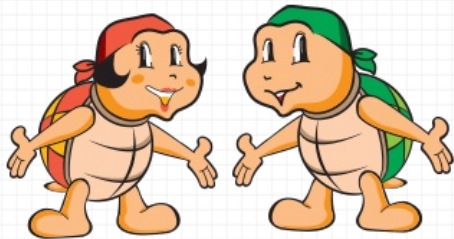


A letter 'Turtle(龜)' in Chinese character is combined with the English expression 'Kid' to name the male image.

The two turtles represent the people of Yeosu, who are making determined efforts to live and work together in harmony. The characters' cute and friendly images depict the characteristics of Yeosu that has a strong growth potential.

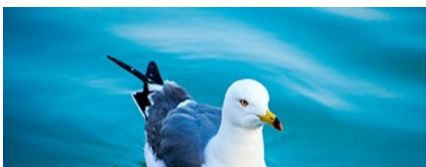
AI download

JPG download



Flower- Camellia

Camellia means 'True Love' in the language of flowers. It is a flower with fragrant smell and rich honey and its yellow tassels symbolize peace. Camellia blooms from late winter to early spring and persists for a long period. From ancient times, its fruit has been used to make oil that lights up the lamp and nourishes hair Camellia flower signifies the strong will and sacrificial spirit of citizens of Yeosu-si.



Bird-Seagull

Seagull is a bird with sturdy temper that is strong against disease. The crv of seaull is cheerful and its feather is beautiful and intimate. (<http://www.yeosu.go.kr>)



The seagull is a clean and noble bird. Seagull is an indigenous bird which symbolizes the sea as a companion to relieve the solitude of fishermen and pursues peace.



City Tree - Camellia Shrub

An evergreen broadleaf tea family shrub, the camellia exudes a fragrant aroma year-round. It is also resistant to cold weather and pollution, thereby epitomizing the spirit of perseverance and tenacity of Yeosu citizens. A camellia shrub represents Yeosu so accurately that among Koreans, the first thing that comes to their mind when they think of Yeosu is the "camellias of Odongdo Island."

COPYRIGHT © NAJU-SI. ALL RIGHTS RESERVED.

Yeosu Web Contents

